



29 November 2013

The Manager Companies
ASX Limited
20 Bridge Street
Sydney NSW 2000

(20 pages by email)

Dear Madam,

PRESENTATION TO ANNUAL GENERAL MEETING

I attach a PowerPoint presentation which is to be delivered to the shareholders present at today's Annual General Meeting which is convened to be held at 09.00 am.

Yours faithfully

A handwritten signature in black ink, appearing to read 'Richard Edwards', written over a horizontal line.

Richard Edwards
Company Secretary

pjn7505



AUGUR RESOURCES LTD
ABN 79 106 879 690

Annual General Meeting
29 November 2013

Disclaimer



This presentation contains certain forecasts and forward-looking information, including regarding possible or assumed future performance, costs, production levels or rates, prices, resources, or potential growth of Augur Resources Ltd (Augur), industry growth, or other trend projections. Such forecasts and information are not a guarantee of future performance and involve unknown risks and uncertainties, as well as other factors, many of which are beyond the control of Augur. Actual results and developments may differ materially from those expressed or implied by these forward-looking statements depending on a variety of factors.

No representation or warranty, expressed or implied, is made or given by or on behalf of Augur, any of Augur's directors, or any other person as to the accuracy or completeness or fairness of the information or opinions contained in this presentation and no responsibility or liability is accepted by any of them for such information or opinions or for any errors, omissions, misstatements, negligent or otherwise, or for any communication written or otherwise, contained or referred to in this presentation.

Accordingly, neither Augur nor any of the Augur directors, officers, employees, advisers, associated persons or subsidiary undertakings shall be liable for any direct, indirect or consequential loss or damage suffered by any person as a result of relying upon the statement or as a result of any admission in, or any document supplied with, this presentation or by any future communications in connection with such documents and any such liabilities are expressly disclaimed.

Nothing in this material should be construed as either an offer to sell or a solicitation of an offer to buy or sell securities.

Cautionary Note to U.S. Investors

This presentation may use the term "measured", "indicated" and "inferred" resources. We advise U.S. investors that the U.S. Securities and Exchange Commission does not recognize them. U.S. investors are cautioned not to assume that any part or all of mineral deposits in these categories will ever be converted into reserves. In addition, "inferred" resources have a great amount of uncertainty as to their existence, and great uncertainty as to their economic and legal feasibility. It cannot be assumed that all or any part of inferred mineral resources will ever be upgraded to a higher category. U.S. investors are cautioned not to assume that any part or all of an inferred mineral resource exists or is economically or legally mineable.

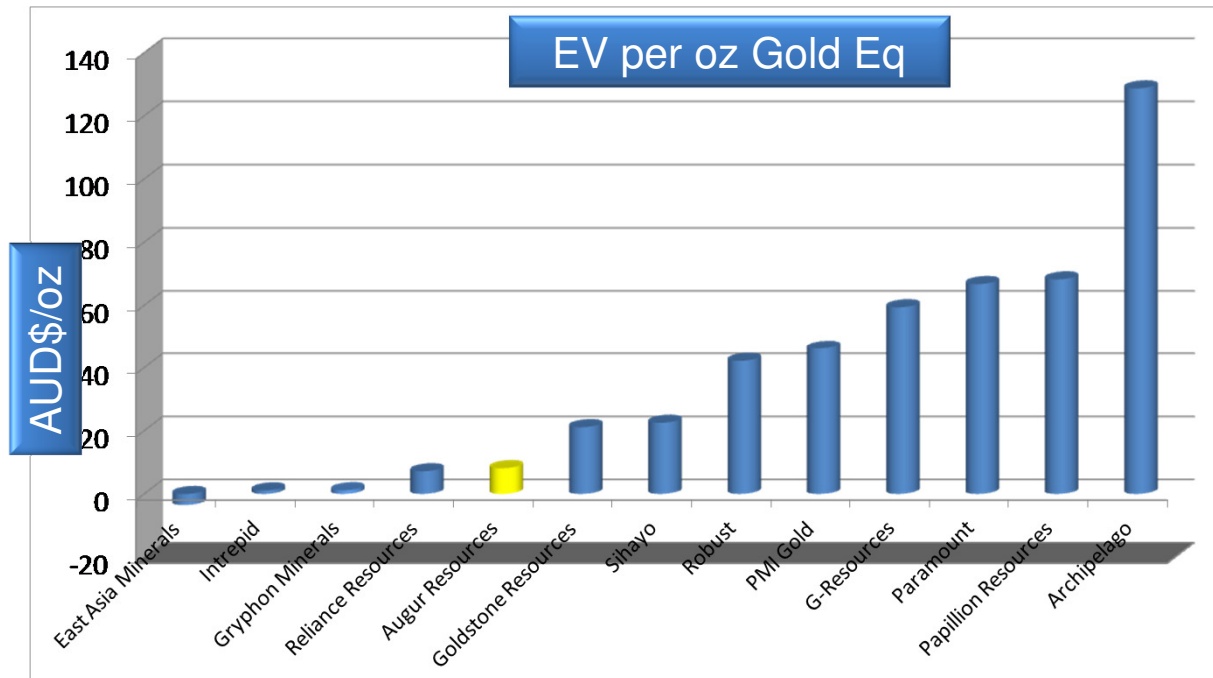
Rajawali Group Investment



- Proposed \$6.75M placement in two tranches.
- Initial tranche of \$3.0M for a 22.6% interest in Augur.
- Second tranche option to reach a 35.0% interest subject to a number of conditions including the completion of the scoping study.
- Direct investment into the project on exercising of the second tranche option.
- Rajawali Group is a significant conglomerate with interests in mining, minerals, infrastructure, transport, hospitality and agriculture.
- Rajawali bring significant experience in operating mines in Indonesia.

A value investment

- 1.54M oz Gold Equivalent Resource**
- 1.01M oz gold
 - 200M pounds of copper
 - Discovery Cost: **\$3.05 per ounce**
 - Discovery Time: **15 months**
 - Resource from surface



Average: **A\$34.00**

Augur: A\$8.10

Peer group comparison

Company	Major Projects	Resource	Gold oz (M)	Market Capital AUD\$M	Price	12 Month Price Range	Listing Exchange
G Resources	Martabe	207.6Mt @ 1.2g/t Au & 11 g/t Ag	8.2	864.5	0.22	0.22-0.46	Hong Kong
Archipelago	Toka Tindung (95%)	70.3Mt @ 1.33g/t Au & 3.2g/t Ag	3.00	595.5	0.59	0.49-0.74	AIM
Intrepid	Tujuh Bukit (80%)	1,700Mt @ 0.41% Cu and 0.46 g/t Au	25.14	150.1	0.27	0.19-0.36	ASX
Kingsrose	Way Linggo (85%)	2.2Mt @ 6.91g/t Au & 45.28g/t Ag	0.485	134	0.39	0.28-0.93	ASX
Robust	Romang (77.5%)	33.5Mt @ 0.5 g/t Au and 18.7 g/t Ag	0.59	35.5	0.34	0.21-0.70	ASX
Sihayo Gold	Sihayo (75%)	17.0Mt @ 2.7g/t Au	1.494	27.9	0.03	0.03-0.12	ASX
Augur Resources	Wonogiri (80%)	90.9 Mt @ 0.35 g/t gold and 0.10% Cu	1.01	10.3	0.05	0.01-0.05	ASX
Southern Arc	W Lombok (90%)	78.5Mt@ 0.57 g/t Au	1.47	6.14	0.06	0.06-0.38	TSX
East Asia Minerals	Miwah (85%)	126.6Mt @ 0.94g/t Au & 2.7 g/t Ag	3.77	3.81	0.04	0.04-0.36	TSX
Reliance	Tanoyan (75%)	4.58Mt @ 1.41g/t Au	0.208	1.26	0.01	0.01-0.10	TSX

Wonogiri location



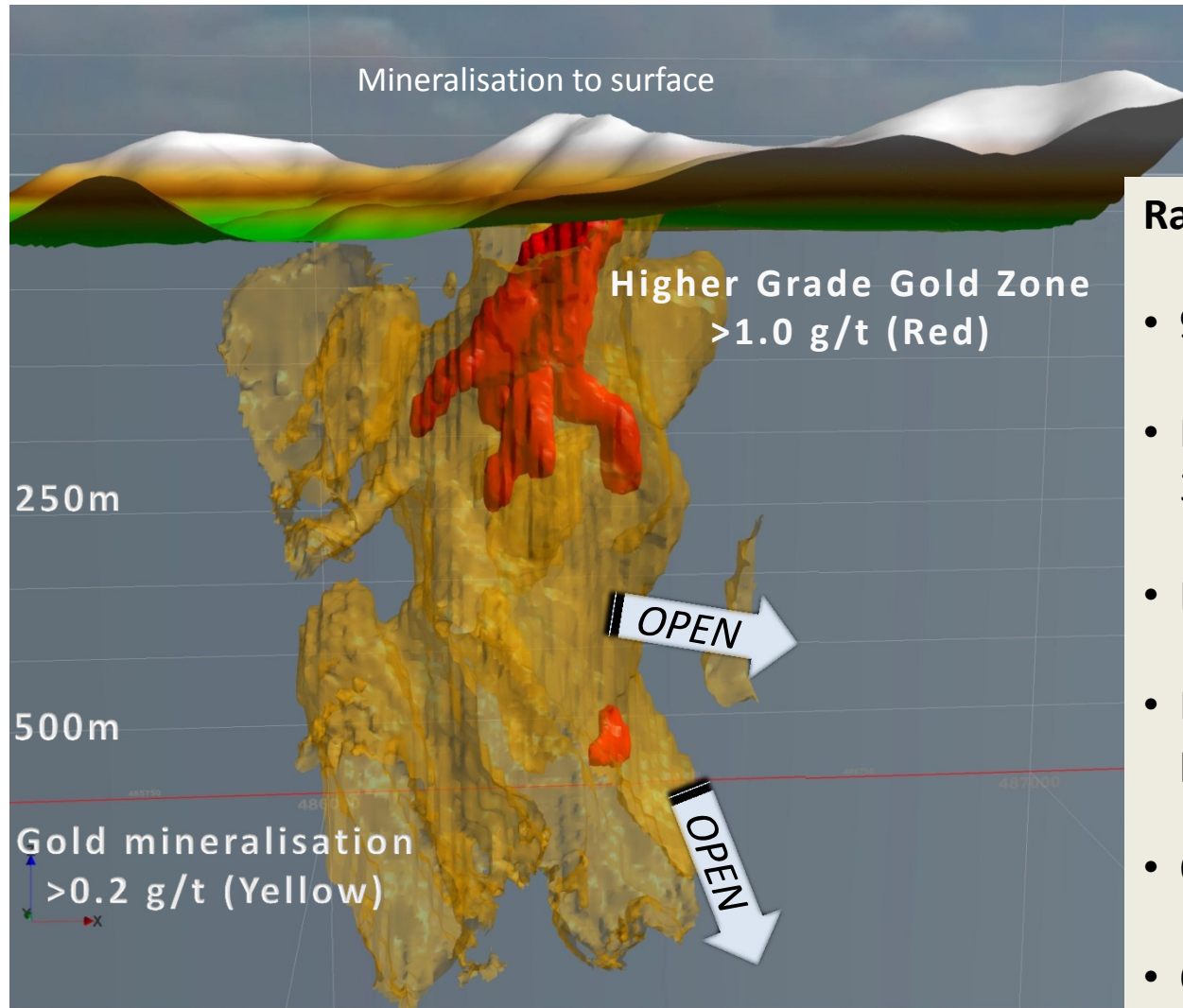
Image Courtesy: NASA

Located in one of the world's great mineralised regions.

What we have

- ❖ Large gold-copper resource to JORC standards.
- ❖ Direct ownership and control of licence.
- ❖ No social issues experienced.
- ❖ No forestry access restrictions over deposit.
- ❖ Positive recoveries and concentrate results.
- ❖ Focus on maximising value to shareholders.
- ❖ Potential for further mineralisation: <10% of area effectively explored.

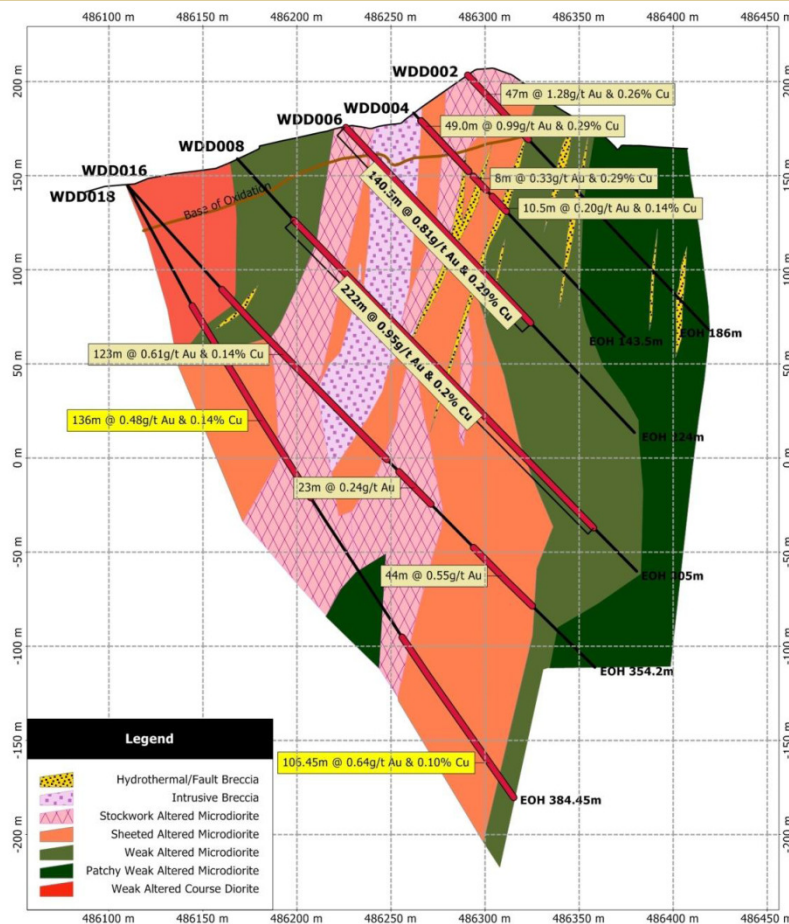
What we found



Randu Kuning Deposit

- 90.9 Mt @ 0.53 g/t AuEq.
- Measured and Indicated 33.7 Mt @ 0.81 g/t AuEq.
- Mineralisation to surface.
- Potential bulk mining, open pit extraction.
- Open at depth.
- Open to the south and west.

Cross section of deposit



Selected Drill Results

- ❖ DHH1: **100.0m @ 1.37 g/t AuEq** (0.96 g/t Au, 0.23% Cu) from 66.0m.
- ❖ WDD001: **68.6m @ 1.70 g/t AuEq** (1.16 g/t Au, 0.30% Cu) from 8.2m.
- ❖ WDD005: **129.0m @ 1.15 g/t AuEq** (0.81 g/t Au, 0.19% Cu) from surface.
- ❖ WDD010: **123.5m @ 1.82 g/t AuEq** (1.42 g/t Au, 0.22% Cu) from 44.5m.
- ❖ WDD015: **182.0m @ 1.06 g/t AuEq** (0.75 g/t Au, 0.17% Cu) from 68.0m.
- ❖ WDD030: **118.0m @ 0.98 g/t AuEq** (0.75 g/t Au, 0.13% Cu) from 245.0m.

Wide, continuous zones of gold and copper mineralisation from surface which broaden at depth.

Excellent recoveries

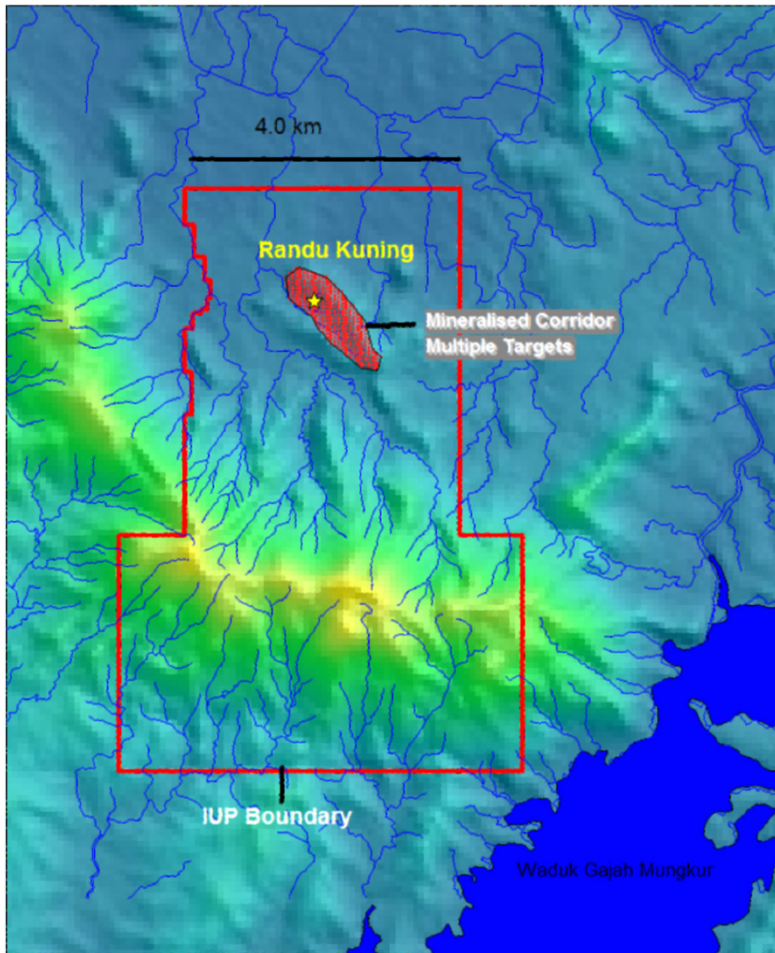
- ❖ Excellent recoveries in sulphide zone: Up to **89.0% recovery of gold and 96.1% of copper**. Possibility to increase gold recovery using additional gravity recovery.
- ❖ Initial concentrate best result returned **19.4% copper and 64.0 g/t gold with 77.0 g/t silver credit**.
- ❖ Optimising work commenced to increase concentrate to >20% copper. Early optimisation results have returned **21.2% copper and 90.6 g/t gold concentrate**.
- ❖ Majority of mineralisation floating off within 5 minutes (very quick).
- ❖ Clean concentrate: Very little arsenic, lead or zinc in concentrate.
- ❖ Testing of oxide resource commenced.



Quality infrastructure

- ❖ Excellent infrastructure at site.
- ❖ Sealed road to edge of deposit.
- ❖ Man made water source directly east of the licence area and other water sources within licence area.
- ❖ Grid power in local area.
- ❖ Potential work force in local region.
- ❖ International airport at Solo (45 minutes drive from site) and about 11 daily flights to Jakarta and flights to Singapore.

3,900 Ha of gold and copper potential

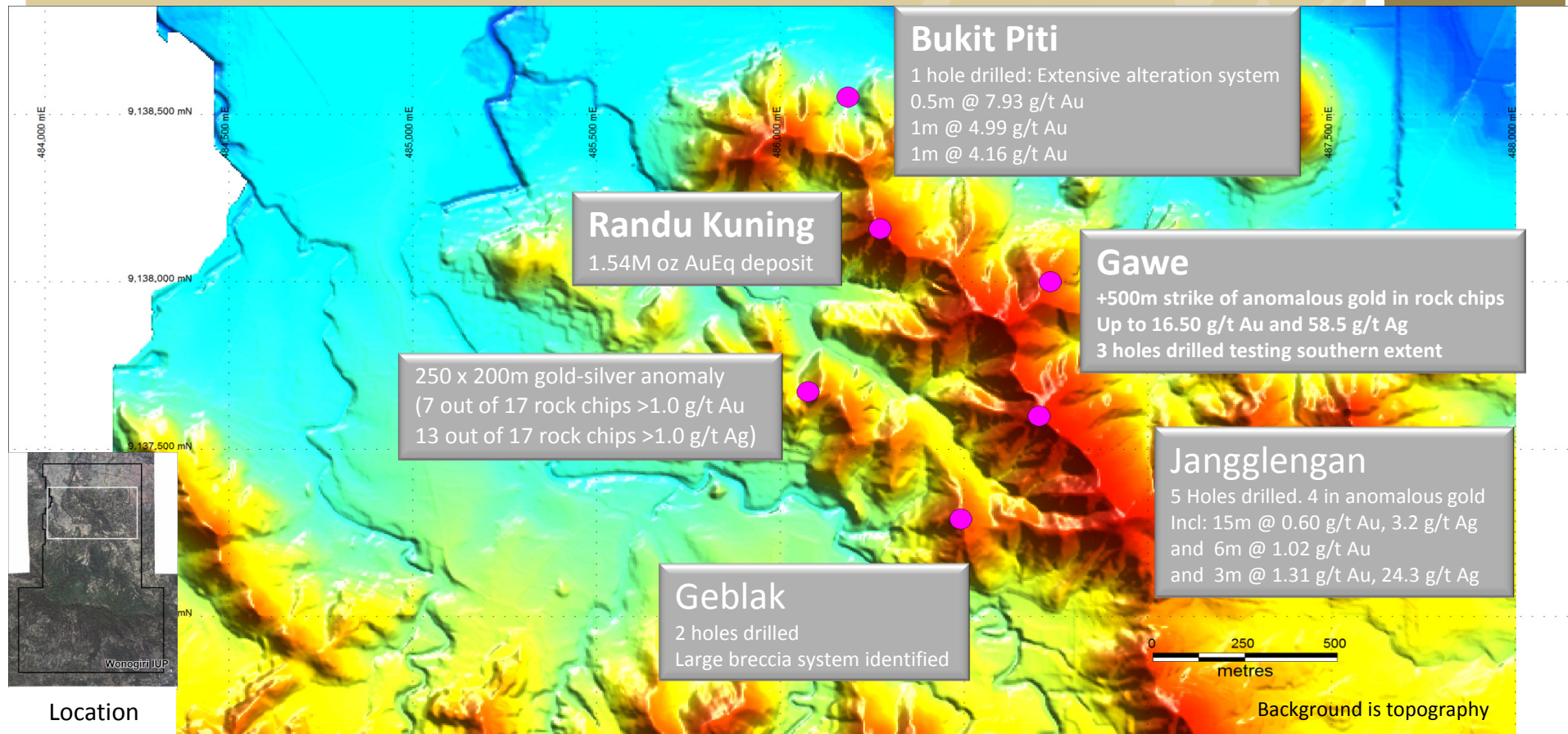


Multiple Targets

- ❖ Porphyry gold-copper mineralisation from surface at Randu Kuning.
- ❖ Extensive low sulphidation epithermal veins over >2.5 km in cumulative strike length surrounding Randu Kuning.
- ❖ Extensive geochemical anomalies in the northern half of the IUP with southern portion of IUP underexplored.



Quality regional prospects



Large mineralised system yet to be fully tested. Randu Kuning is just one of a number of prospects in the northern Wonogiri region. Mineralised zone covers over 1.7 kilometres of strike.

Advancing regional targets in 2014

- ❖ Continuation of target definition.
- ❖ Exploration drilling to test primary targets.
- ❖ Preliminary metallurgical testing of new deposits if warranted.



A value proposition

- ❖ **1.54 Moz gold equivalent JORC mineral resource¹** estimated for Randu Kuning deposit:
 - 1.01M ounces of gold; and
 - 200M pounds of copper.
- ❖ **>50 %** of gold resource in **JORC Measured** category.
- ❖ **Undervalued Enterprise Value:** Augur A\$8.10/oz AuEq compared to peers A\$34.00/oz AuEq.
- ❖ 80% **direct** ownership of Wonogiri.
- ❖ **No forestry** access restrictions over the deposit.
- ❖ Excellent metallurgical results: Up to **89.0%** recovery of gold and **96.1%** of copper.
- ❖ Plenty of upside potential in resource with 5 significant near surface targets.
- ❖ Experienced Board and management team.

Corporate overview

Directors

Chairman	Norman Seckold
Managing Director	Grant Kensington
Director	Peter Nightingale
Director	Justin Werner

Capital

205.3 million shares on issue

4 million unlisted options

Market cap: A\$10.3 million

Share Price and Volume – 52 Weeks



Major Shareholders

Management	34.60%
Oon Peng Lim	4.87%
Company Fifty Pty Ltd	3.11%
Ichiya Co Ltd	2.41%
Top 10	52.31%
Top 20	64.45%

Thank you



Augur Resources Ltd

Level 2, 66 Hunter St,
Sydney, NSW 2000, AUSTRALIA

Phone: +61 2 9300 3310

www.augur.com.au

ASX code: AUK

Statement of compliance



The information in this report that relates to Exploration Results and Mineral Resources is based on information compiled by Augur staff and contractors and approved by Mr Grant Kensington, geoscientist, who is a Member of the Australasian Institute of Mining and Metallurgy. Grant Kensington is a full-time employee of the Company who has sufficient experience which is relevant to the style of mineralisation and type of deposit under consideration and to the activity which he is undertaking to qualify as a Competent Person as defined in the 2004 Edition of the 'Australasian Code for Reporting of Exploration Results, Mineral Resources and Ore Reserves'. Grant Kensington has consented to the inclusion in this report of the matters based on his information in the form and context in which they appear.

Mineralisation cut-off used is 0.2 g/t gold and/or 0.2% copper with a maximum contiguous dilution interval of 4.0 metres. Sample intervals are generally either 0.5 metres or 1.0 metre. Assaying has been completed by PT Intertek Utama Services, a subsidiary of Intertek Group Inc. Blanks and/or independent standards are used in each sample batch at approximately 10.0 metre intervals. Mineralised intervals are reported as drilled depths. Insufficient data is currently available to determine the true width of drill intercepts.

Gold Equivalent results are calculated using a gold price of \$1,198/oz and a copper price of \$6,945/t. Silver is excluded from the gold equivalent calculation as no metallurgical testing of the recovery properties of silver from this project has occurred. In calculating the Gold Equivalents for the drilling results in the table above gold and copper recoveries are assumed to be 100%. As previously reported metallurgical testing has resulted in mean recoveries from sulphide material of over 82.5% for gold (Au) and 94% for copper (Cu). It is the Company's opinion that all metals used in the equivalent calculation have a reasonable potential to be recovered in the event that material from the Wonogiri project was to under go processing.

¹ The gold equivalent calculation used is:

$$\text{AuEq (g/t)} = \text{Au (g/t)} + ((\text{Cu}(\%)*6945)/38.51)$$

(ie 1.0% Cu = 1.80 g/t Au)

Further drill hole details can be found on the Augur website at www.augur.com.au

JORC Resource Summary

JORC Category	Tonnes (M)	Gold Equivalent (g/t)	Gold (g/t)	Copper (%)	Gold Equivalent (oz)	Gold (oz)	Cut-off (g/t AuEq)
Measured	8.3	1.45	1.07	0.21	389,000	287,000	1.0
	20.4	1.03	0.72	0.17	673,000	473,000	0.5
	28.3	0.84	0.56	0.15	765,000	513,000	0.2
Indicated	0.6	1.33	1.02	0.17	27,000	21,000	1.0
	3.5	0.81	0.59	0.12	92,000	67,000	0.5
	5.3	0.66	0.45	0.11	113,000	78,000	0.2
Inferred	0.3	1.38	1.20	0.10	14,000	12,000	1.0
	9.2	0.66	0.45	0.11	196,000	135,000	0.5
	57.1	0.36	0.23	0.07	660,000	423,000	0.2
Total	9.3	1.44	1.07	0.21	430,000	319,000	1.0
	33.2	0.90	0.63	0.15	962,000	675,000	0.5
	90.9	0.53	0.35	0.10	1,538,000	1,014,000	0.2