

24 November 2010

The Manager Companies
ASX Limited
20 Bridge Street
Sydney NSW 2000

(25 pages by email)

Dear Madam,

PRESENTATION TO ANNUAL GENERAL MEETING

I attach a PowerPoint presentation which is to be delivered to the shareholders present at today's Annual General Meeting which is convened to be held at 10.00 am.

Yours faithfully



Marcelo Mora
Company Secretary

pjn5719



AUGUR RESOURCES LTD

ABN 79 106 879 690



ANNUAL GENERAL MEETING
24 NOVEMBER 2010

Grant Kensington - Managing Director

ASX: AUK

www.augur.com.au

Disclaimer



This material contains certain forecasts and forward-looking information, including regarding possible or assumed future performance, costs, production levels or rates, prices, resources, or potential growth of Augur Resources Ltd (Augur), industry growth, or other trend projections. Such forecasts and information are not a guarantee of future performance and involve unknown risks and uncertainties, as well as other factors, many of which are beyond the control of Augur.

Actual results and developments may differ materially from those expressed or implied by these forward-looking statements depending on a variety of factors.

No representation or warranty, expressed or implied, is made or given by or on behalf of Augur, any of Augur's directors, or any other person as to the accuracy or completeness or fairness of the information or opinions contained in this presentation and no responsibility or liability is accepted by any of them for such information or opinions or for any errors, omissions, misstatements, negligent or otherwise, or for any communication written or otherwise, contained or referred to in this presentation.

Accordingly, neither Augur nor any of the Augur directors, officers, employees, advisers, associated persons or subsidiary undertakings shall be liable for any direct, indirect or consequential loss or damage suffered by any person as a result of relying upon the statement or as a result of any admission in, or any document supplied with, this presentation or by any future communications in connection with such documents and any such liabilities are expressly disclaimed.

Nothing in this material should be construed as either an offer to sell or a solicitation of an offer to buy or sell securities.

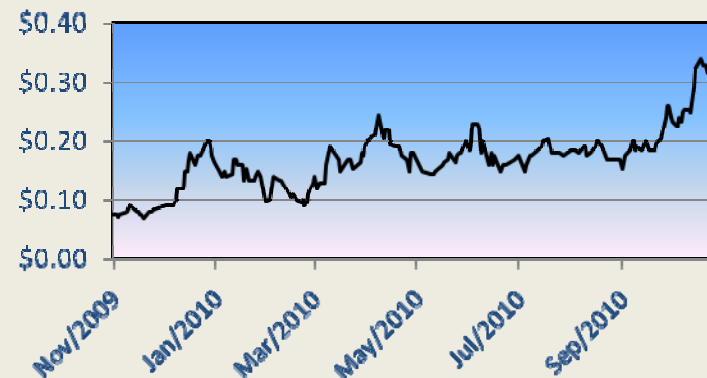
The information in this report that relates to Exploration Results or Mineral Resources is based on information compiled by Augur staff and approved by Mr Grant Kensington, geoscientist, who is a Member of the Australasian Institute of Mining and Metallurgy. Mr Kensington is a full-time employee of the Company who has sufficient experience which is relevant to the style of mineralisation and type of deposit under consideration and to the activity which he is undertaking to qualify as a Competent Person as defined in the 2004 Edition of the 'Australasian Code for Reporting of Exploration Results, Mineral Resources and Ore Reserves'. Mr Kensington has consented to the inclusion in this report of the matters based on his information in the form and context in which they appear.

Company Snapshot

Directors

Chairman	Norman Seckold
Managing Director	Grant Kensington
Director	Peter Nightingale

Share Price – 52 Weeks



Capital

125.5 Million Shares on Issue
1 Million Employee Options

5 Million Options to be Issued
10 Million Shares to be Issued

Major Shareholders

Permgold Pty Ltd	31.88%
Rosignol Pty Ltd	9.56%
Company Fifty Pty Ltd	4.78%
Top 10	64.29%
Top 20	71.92%

Strategy

Commodity Focus

Gold - Copper - Nickel

Area of Focus

Indonesia

Lachlan Fold Belt, NSW

Strategy

Increase shareholder value by advancing gold, copper, and nickel projects, through acquisition and exploration, to cash flow positive operating mines

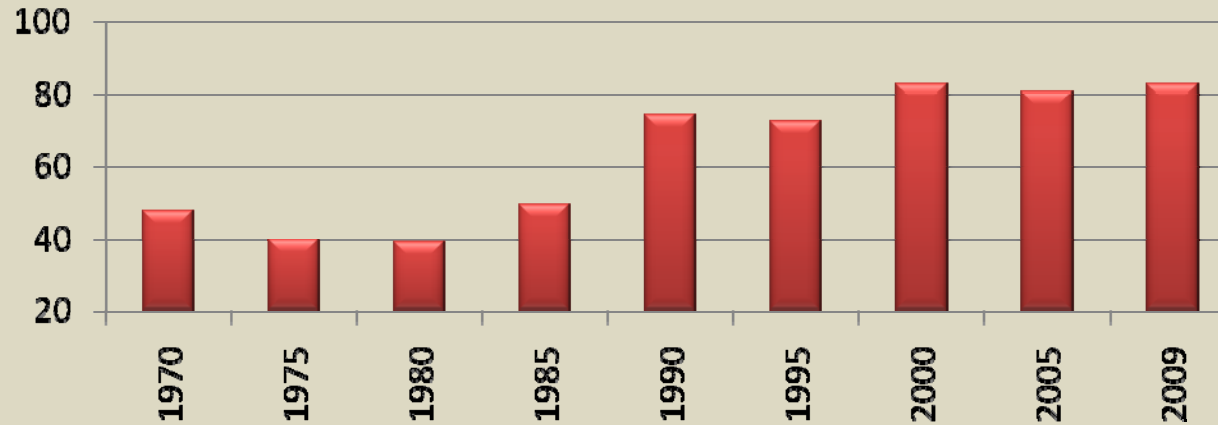


Why Gold ?

- **Increased demand** – drive by electronics and jewellery demand. Growing wealth in countries such as China and India is having an impact on demand. This growth is likely to continue for some time yet.
- Production in some of the world's leading producing countries is falling including South Africa. **New resources will be needed to fill growing demand.**
- Near surface deposits can be brought to mine ready relatively quickly.
- Gold can be associated with other saleable products such as silver and copper.

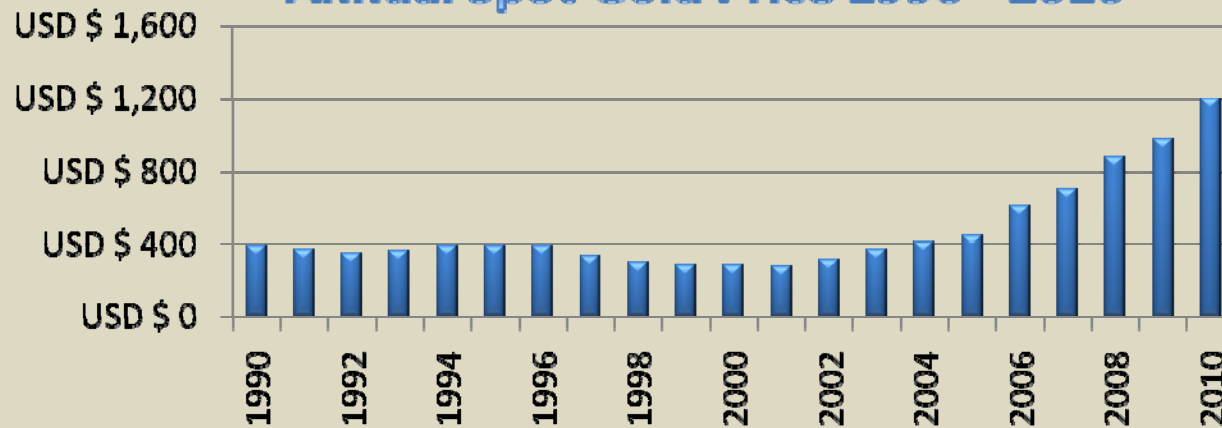
Why Gold ?

World Gold Production (Moz)



Source: goldsheetlinks

Annual Spot Gold Price 1990 - 2010



Source: kitco

Why Indonesia ?

- Some very large gold (+/- copper) mines in the world are in Indonesia (e.g. Grasberg, Batu Hijau, Gosowong, Pongkor). Grasberg is the largest gold mine (38.5 M oz) and the third largest copper mine in the world).
- Indonesia is the fifth largest gold producing nation (Australia is fourth).
- “Indonesia has some of the best geological prospectivity in the world and offers great potential for future exploration and development work” (GFMS, 2004).
- Deposits tend to be shallow (may result in lower relative mining costs).
- Mining law changes passed in 2009, other laws surrounding foreign investment changed over the last four years.
- Close to major markets.

Project Areas - Indonesia



Infrastructure



ASX: AUK

www.augur.com.au

JAMPANG - Infrastructure

- Located approximately 150km south of Jakarta (4.5 hours drive) by sealed road from Jakarta on the island of Java.
- The region is well supported by sealed roads, power and water.
- The deposit is approximate 20km from the coastal town of Pelabuhan ratu.
- Power station being built at Pelabuhan ratu.
- Drilling companies and support sourced from local companies. Most exploration service companies with Indonesian operations are Jakarta based.
- Topography – approximately 700m altitude rolling to rugged in nature.
- **LOW OFF SITE CAPITAL COSTS EXPECTED.**

JAMPANG – The Deal

- Up front payment of US\$250,000 and issue of 10 million shares and 5 million options for and option to acquire 90% of PT Golden (the holder of the IUPs – exploitation and exploration).
- Two years from February 2010 to determine if we are willing to proceed with the acquisition.
- No exploration expenditure commitment.
- US\$9,000,000 to exercise the option.
- In addition – separate profit sharing agreement 50:50 on any gold production during the next two years. Production limit of 100 ton/day.

JAMPANG - History

- Historical small scale gold mining by the Dutch (1800s and later).
- Jampang lies within the Sumatra-Java Epithermal Belt. This belt includes the Pongkor Gold deposit +3M oz gold (8.6 g/t gold; 110 g/t Ag).
- Mispec Resources Inc explored the Jampang area between 1996 and 1998.
- Mispec undertook a significant drill program (+32,000m; 246 holes) between 1996-1998 after early holes intersected highly anomalous gold.
- Mispec undertook ground geophysical surveys in 1997 (possibly after the completion of the drilling program) and reported that mineralisation appears to be related to geophysical anomalies. They identified and ranked 10 anomalies – the top 7 sitting within the Central Jampang Gold area.

JAMPANG – History (cont)

- Mispac engaged Snowden and Associates in Perth to fully review the exploration methods and practices and geochemical results. Snowden supported the methodology and confirms mineralisation.
- Mispac had difficulty raising further funds in 1998 due to Bre-X, political environment and the Asia financial crisis.
- The central Jampang area which covers the main Lipi and Puteran-Simpang resource was acquired by a local company “PT Golden”. Most of the historical drilling done at Jampang is within this 390 ha block.
- Augur acquired a two year option over 90% of Golden in February 2010.

JAMPANG – Deposit Area

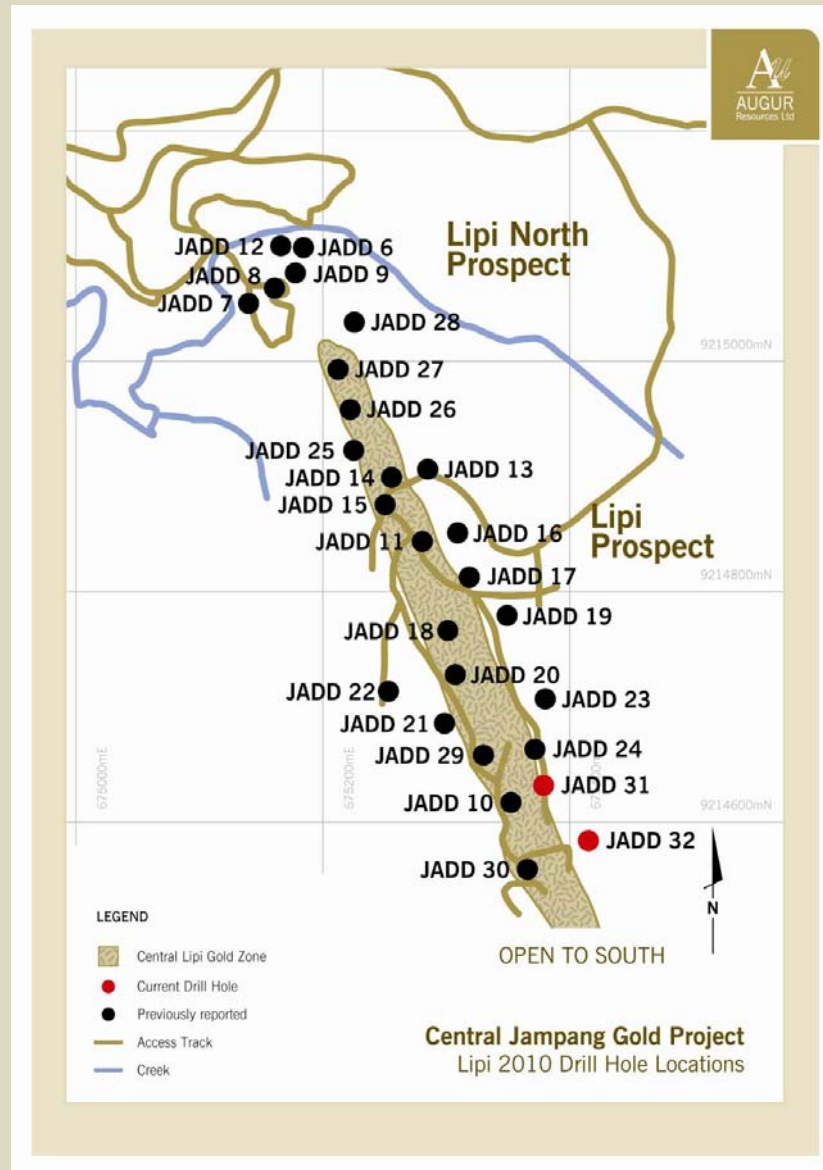


JADD10
36m @ 1.74 g/t gold
& 0.89% copper

Lipi Gold Zone

JADD11
20.2m @ 1.43 g/t
gold

JAMPANG – Gold Results



JAMPANG – Gold Results

- The results indicate **significant shallow gold mineralisation** at Jampang. The main mineralisation is in the Lipi zone which has a strike of +500m and is open to the south.
- Gold appears to be multiple vein and stock-work related. A mineralised breccia pipe occurs in the NW of the area.
- Gold mineralisation is shallow.
- Work is being undertaken to determine the recovery.
- Field observations suggest that the deposit is epithermal in nature and a significant **copper** credit and silver credit is likely.
- A porphyry target below?

JAMPANG – Gold Results

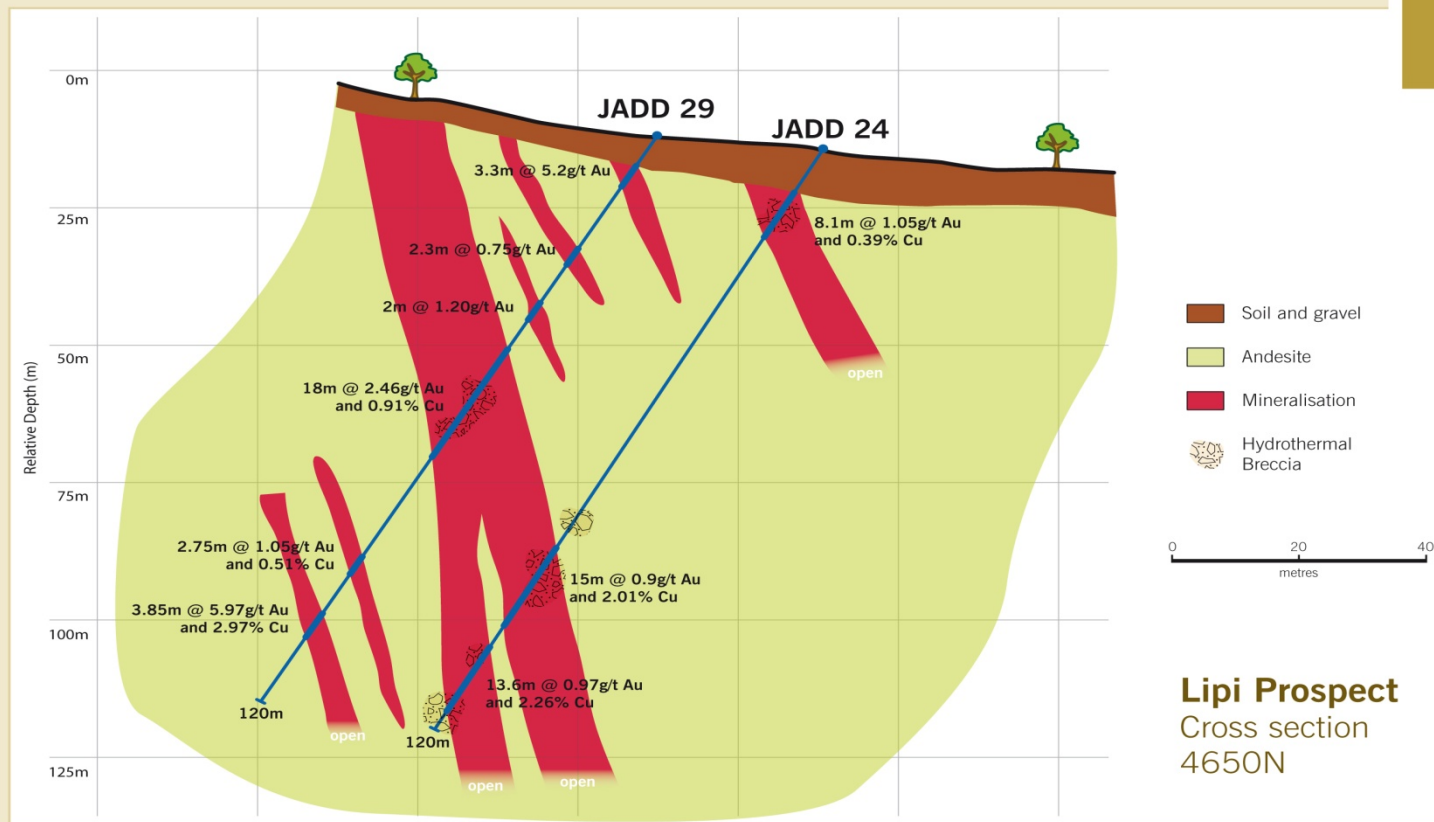
A selection of Mispec drill results:

HOLE	From (m)	To (m)	Interval (m)	Gold (g/t)
JRC91	64	92	28	1.44
JRC93	114	127	13	2.94
JRC98	38	58	20	3.76
JRC103	71	82	11	2.87
JRC104	83	98	15	3.30
JRC183E	40	173	133	1.85
JRC204E	87	105	18	1.53
JRC205W	57	71	14	3.07
JRC219W	57	175	118	3.16
Including	57	95	38	8.60
JDD244W	61	82	21	2.36

JAMPANG – Results

HOLE	From (m)	To (m)	Interval (m)	Gold (g/t)	Silver (g/t)	Copper %
JADD2	79	86	7	3.09	16.1	0.25
JADD8	73	83	10	7.47	6.4	
JADD10	28.5	64.6	36	1.74	8.0	0.89
JADD11	71.5	91.7	20.2	1.43	5.2	0.21
JADD14	63.2 104.3	75.5 107.3	12.3 3	3.70 14.35	12.7 8.9	0.19 0.59
JADD19	142	156.5	14.5	1.46	8.1	0.52
JADD24	84 103.9	99 117.5	15 13.6	0.90 0.97	18.6 14.9	2.01 2.26
JADD25	6.7 22.5	16.8 34.5	10.1 12.0	2.00 1.35		
JADD29	47 102	65 105.85	18 3.85	2.46 5.97	11.9 25.7	0.91 2.97
JADD31	71.6 90.4	85.7 101.2	14.1 10.8	1.46 0.89	11.9 9.8	0.88 1.10

JAMPANG – Results



JAMPANG – Deposit Area

LIPI NORTH ZONE

Gold bearing zone at surface

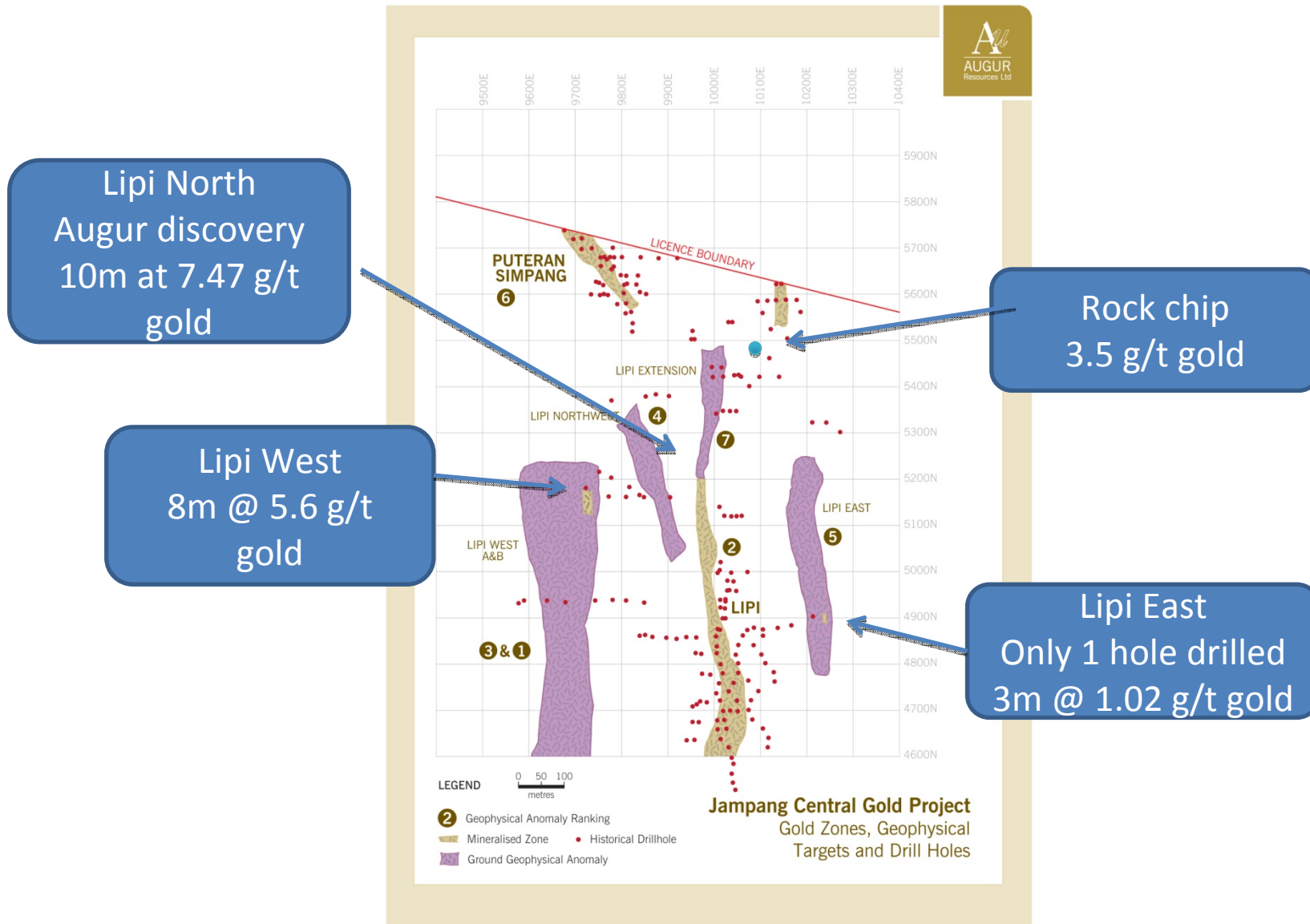


Drilling near this zone JADD8 10m @ 7.47 g/t gold from 73m

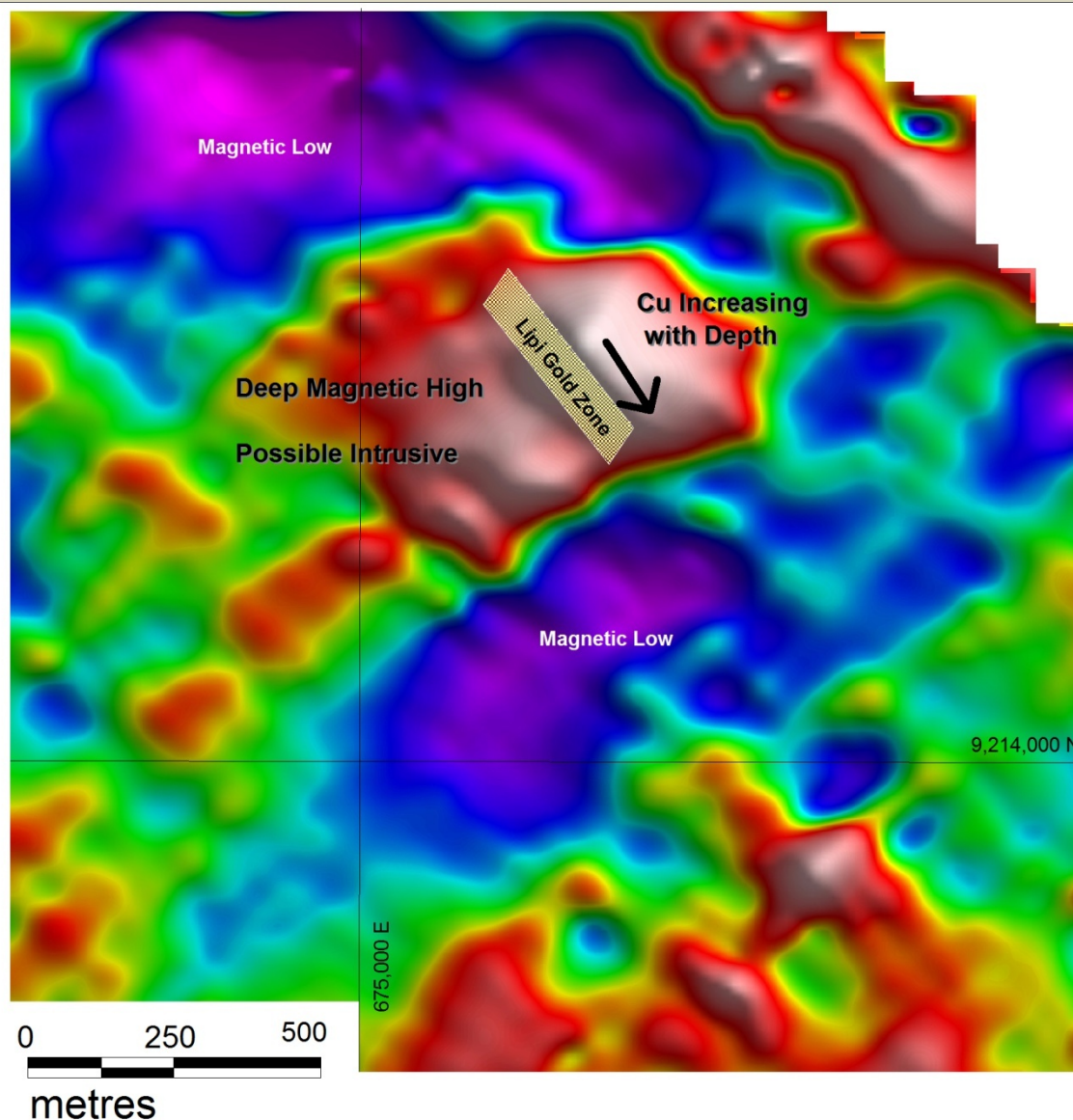
JAMPANG – Additional Targets

- Gold mineralisation at Jampang is reported to be coincidental with geophysical anomalies.
- Untested geophysical targets.
- The **highest rank geophysical anomaly at Lipi West** very limited drill testing - 3 drill holes one of which intersected **8m at 5.6 g/t gold!**
- The **Lipi West anomaly** has a strike length of over 600m and is open to the south.
- The Lipi East anomaly has **only one drill hole** targeted on it. This hole returned **3m at 1.02 g/t gold.**
- Potential for increase in resource to come from close by resources.

UNDEREXPLORED GOLD ZONES



JAMPANG – Additional Targets



Why Invest in AUGUR?

- **New advanced gold opportunity.**
- **“Mining Lease” already in place – short term cash flow possible.**
- **Excellent infrastructure – lowers upfront capital cost.**
- **Shallow mineralisation – favourable mining cost.**
- **Multiple commodities – spreading the risk.**
- **Tight shareholding.**
- **Regular news flow.**